

Modernizing Training for the Next Generation of Nuclear Workers



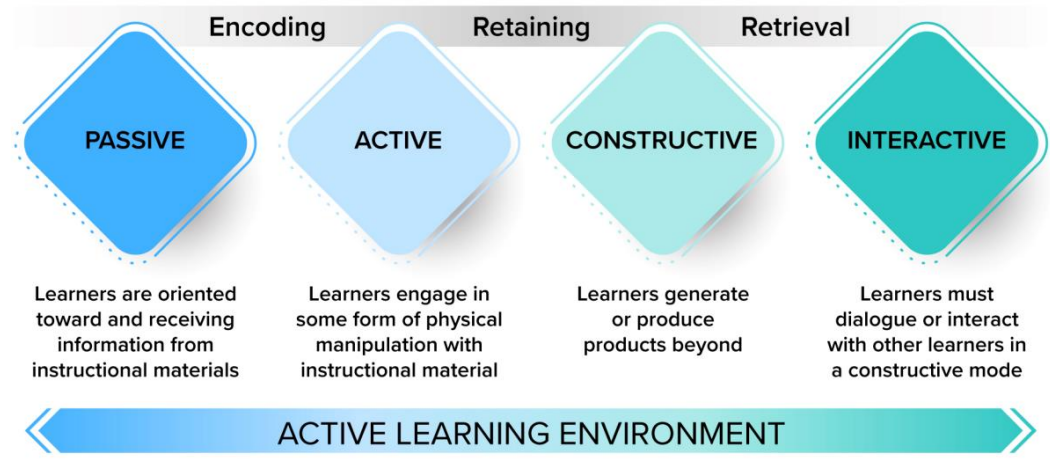
Chuck Lease
Sr. Program Manager, Nuclear Training and Development
clease@epri.com

Light Water Reactor Sustainability R&D Program
December 3, 2024

Modernizing Energy Workforce Training: An Introduction to Active, Learner-Centric Learning Environments

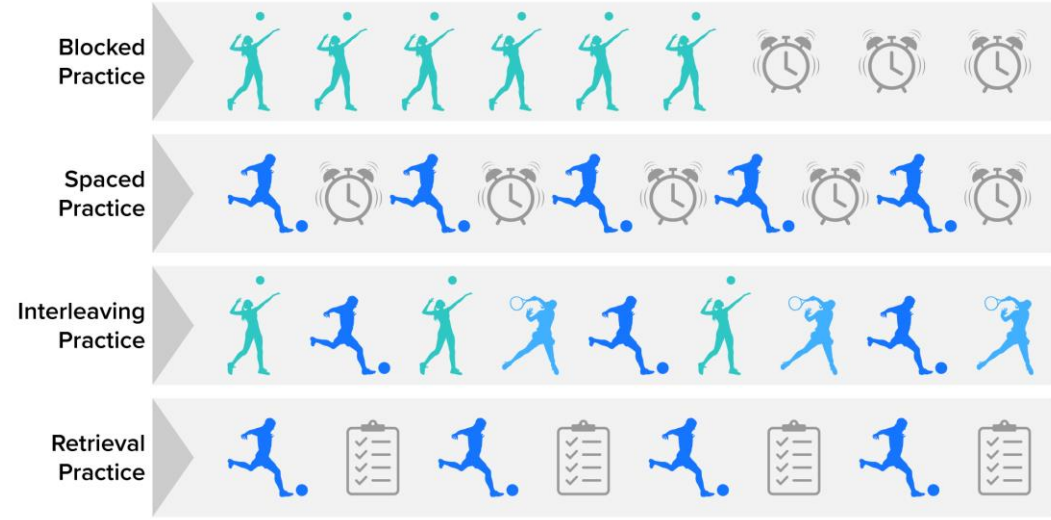


LEARNER-CENTRIC	ELEMENTS	TEACHER-CENTRIC
Constructed by Learner	KNOWLEDGE	Transmitted to Learner
Active	LEARNER ENGAGEMENT	Passive
Facilitator/Partner	ROLE OF INSTRUCTOR	Leader/Authority
Developing Deeper Understanding	LEARNING GOAL	Learning for Correct Answers
For Ongoing Feedback	ROLE OF ASSESSMENT	Mainly for Grading
Multidimensional Testing	ASSESSMENT METHOD	One-dimensional Testing
Collaborative, Supportive	CULTURE	Competitive, Individualistic



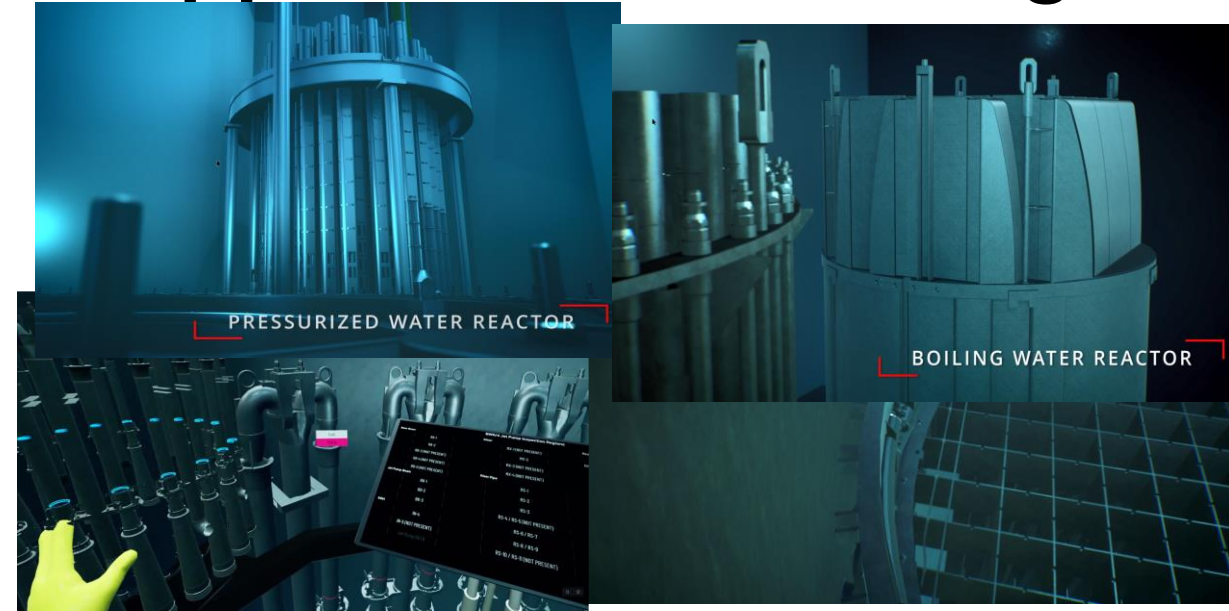
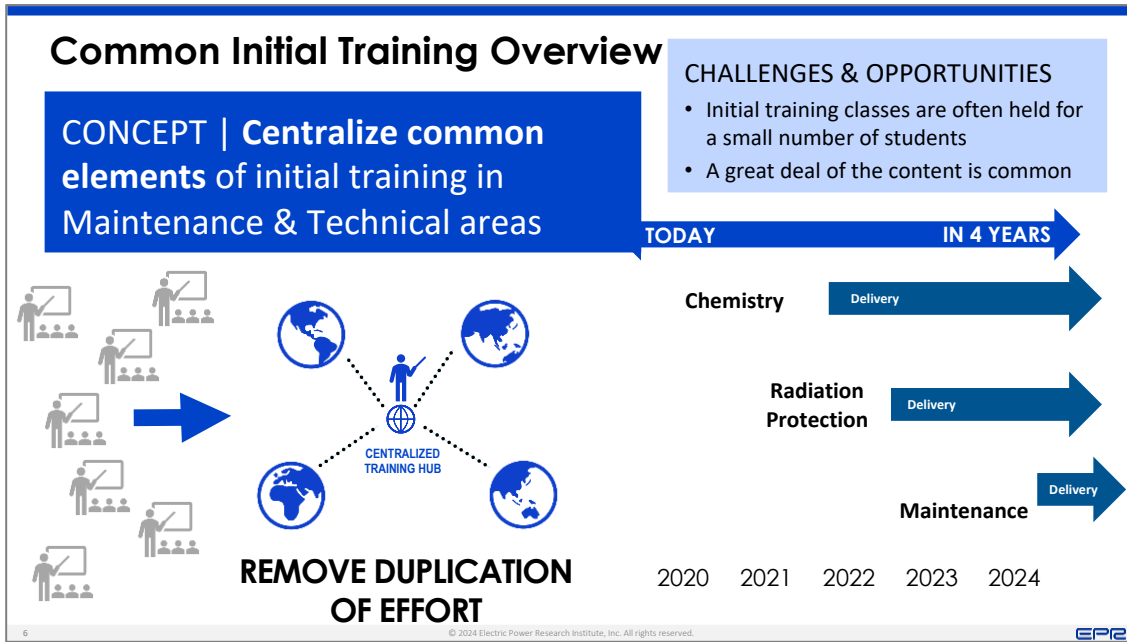
Recommendations:

- Science of learning strategies can be applied to nuclear training to enable active, learner-centric environments
- Technology can be leveraged to enable active learning environments
- Further research is recommended to programmatically align learning strategies, prudently apply technology, and explore new methodologies for learner assessments.

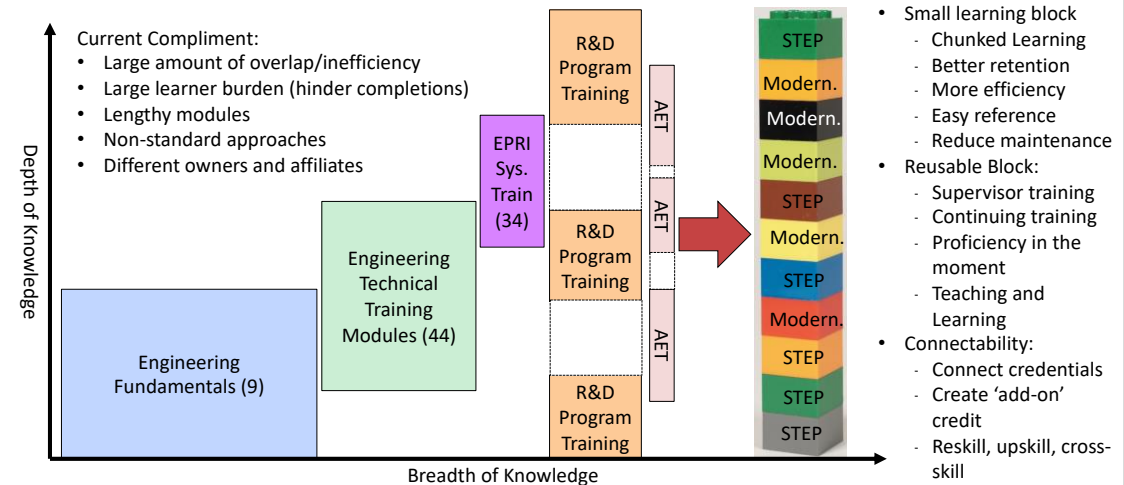


<https://www.epri.com/research/products/000000003002029999>

EPRI Application of Modernized Approaches to Training



Streamlined Training for Engineering Proficiency



Focus on Proficiency, Advanced Training, and Job Mobilization

Learning Research: Next Steps

- Ideas for Continued Research:
 - Investigation of Emerging Technologies and their Application for Technical Training and Workforce Development
 - Methodologies for Evaluating Worker Skills: Computer-Based Evaluations
 - Examination of Energy Sector Knowledge, Skills, and Behaviors
 - Scientific Approaches for Assessing Worker Competencies and Proficiency: Key Performance Indicators



https://youtu.be/XyVB_VsatXQ?feature=shared

Strategic research to support modernized approached to learning.



TOGETHER...SHAPING THE FUTURE OF ENERGY®